



ABSOLUTE
PROPERTY

Sopers House, Soper Road, Cuffley EN6 4RY

☎ 020 8882 8156 📞 020 8882 8155

✉ info@absolutepropertyagents.com

🌐 www.absolutepropertyagents.com



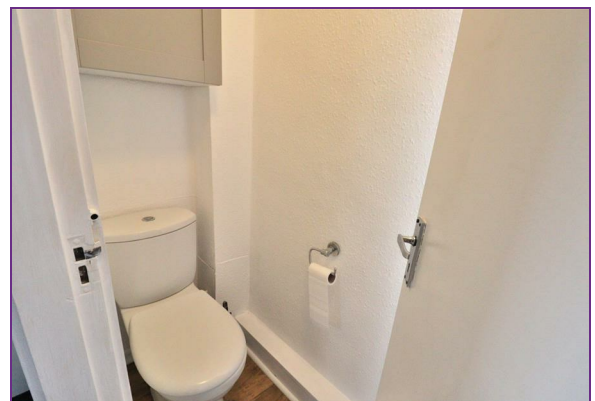
51 Deerswood Avenue, Hertfordshire
AL10 8RZ

£1,400 PCM

Absolute property are delighted to offer this three bedroom maisonette located close to Hatfield University , the galleria, and Hatfield Train station. The property benefits from a spacious lounge, three double bedrooms, downstairs WC, shower room as well as a modern fitted kitchen. Viewing highly recommended. AVAILABLE NOW



51 Deerswood Avenue, Hertfordshire
AL10 8RZ



Energy Efficiency Rating		Environmental Impact (CO ₂) Rating	
Current	Potential	Current	Potential
100-125 kWh/m ² (A)		100-125 g/kWh (A)	
75-100 kWh/m ² (B)		125-150 g/kWh (B)	
50-75 kWh/m ² (C)		150-200 g/kWh (C)	
25-50 kWh/m ² (D)		200-250 g/kWh (D)	
10-25 kWh/m ² (E)		250-300 g/kWh (E)	
1-10 kWh/m ² (F)		300-350 g/kWh (F)	
0-1 kWh/m ² (G)		350+ g/kWh (G)	

For energy efficiency - higher is better
For environmental impact - lower is better

England & Wales EU Directive 2002/91/EC